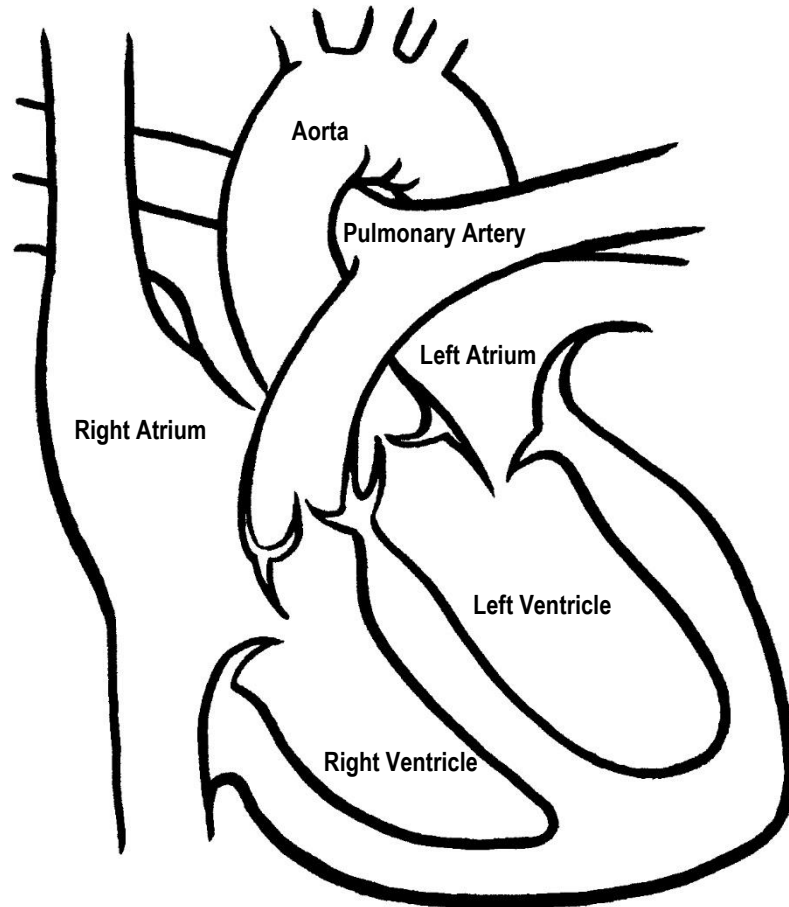


Heart Diagram

with text labels



To Learn More

- Prenatal Diagnosis and Treatment Program
206-987-5629

To learn more, call your Heart Center location

- | | |
|--|--|
| • Seattle, Bellevue or Everett
206-987-2015 | • Montana
406-771-3223 |
| • Alaska
907-339-1945 | • Tri Cities
509-375-9050 |
| • Federal Way, Olympia, Silverdale or Tacoma
253-682-1466 | • Wenatchee
509-662-9266 |
| • seattlechildrens.org | • Yakima
509-375-9046 |
| | • Ask your child's healthcare provider |

Free Interpreter Services

- In the hospital, ask your nurse.
- From outside the hospital, call the toll-free Family Interpreting Line, 1-866-583-1527. Tell the interpreter the name or extension you need.

Seattle Children's offers interpreter services for Deaf, hard of hearing or non-English speaking patients, family members and legal representatives free of charge. Seattle Children's will make this information available in alternate formats upon request. Call the Family Resource Center at 206-987-2201. This handout has been reviewed by clinical staff at Seattle Children's. However, your child's needs are unique. Before you act or rely upon this information, please talk with your child's healthcare provider. © 2019 Seattle Children's, Seattle, Washington. All rights reserved.



8/19
PE734B