



# Emergency Tracheostomy Airway Management for Child with Central Breathing Issues

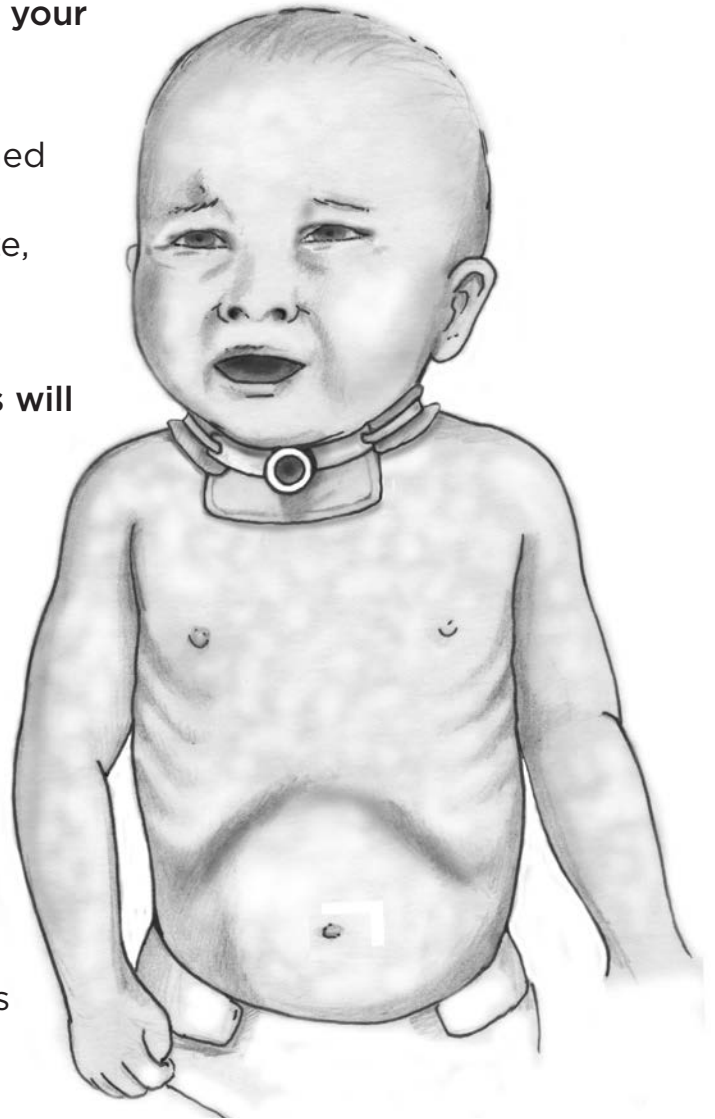
**Always have the following equipment with your child:**

- Suction equipment and supplies
- Resuscitator bag with O<sub>2</sub> reservoir attached and mask
- Spare tracheostomy tube of the same size, and a smaller tube
- Ventilator system as needed

**Ways a child with central breathing issues will show signs of respiratory distress**

Children with central breathing issues will not show the usual signs of respiratory distress. Signs to watch for include:

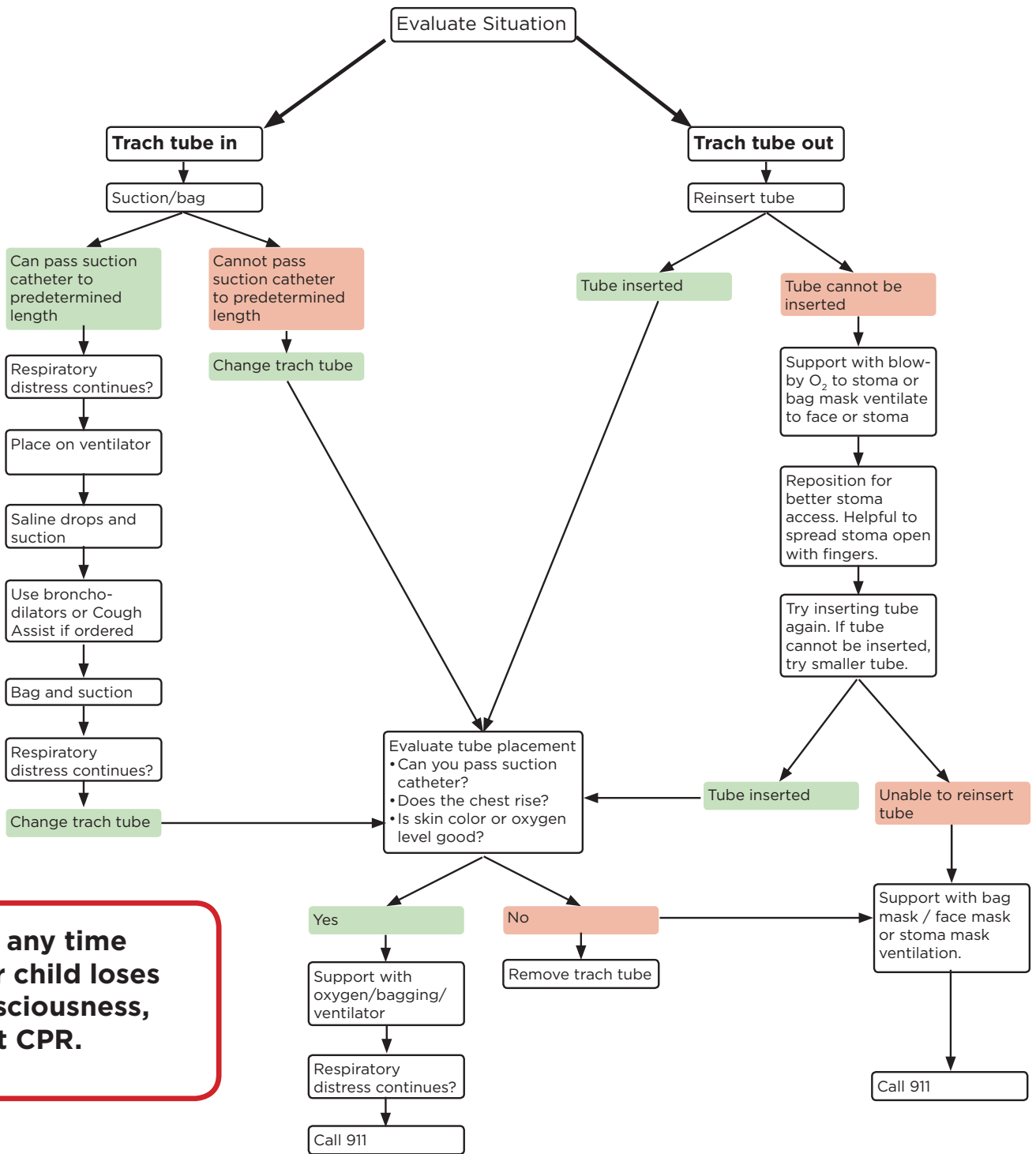
- Fussy, unhappy, irritable – headache (sometimes)
- Decrease in level of responsiveness
- Sleeping more than usual
- Sweaty
- Skin color changes – pale to dusky
- Drop in oxygen level – lower O<sub>2</sub> sats
- Increased vocalization around trach tube is usually a sign that the trach tube needs to be changed due to dry mucus coating in the inner lumen of tube



My child's goal end tidal carbon dioxide level (ETCO<sub>2</sub>) is \_\_\_\_\_ - \_\_\_\_\_

If higher than goal, place child on ventilator.

Follow the arrows to help your child in breathing distress



**If at any time your child loses consciousness, start CPR.**

Seattle Children's offers interpreter services for Deaf, hard of hearing or non-English speaking patients, family members and legal representatives free of charge. Seattle Children's will make this information available in alternate formats upon request. Call the Family Resource Center at 206-987-2201.

This handbook has been reviewed by clinical staff at Seattle Children's. However, your child's needs are unique. Before you act or rely upon this information, please talk with your child's healthcare provider.

© 2018 Seattle Children's, Seattle, Washington. All rights reserved.