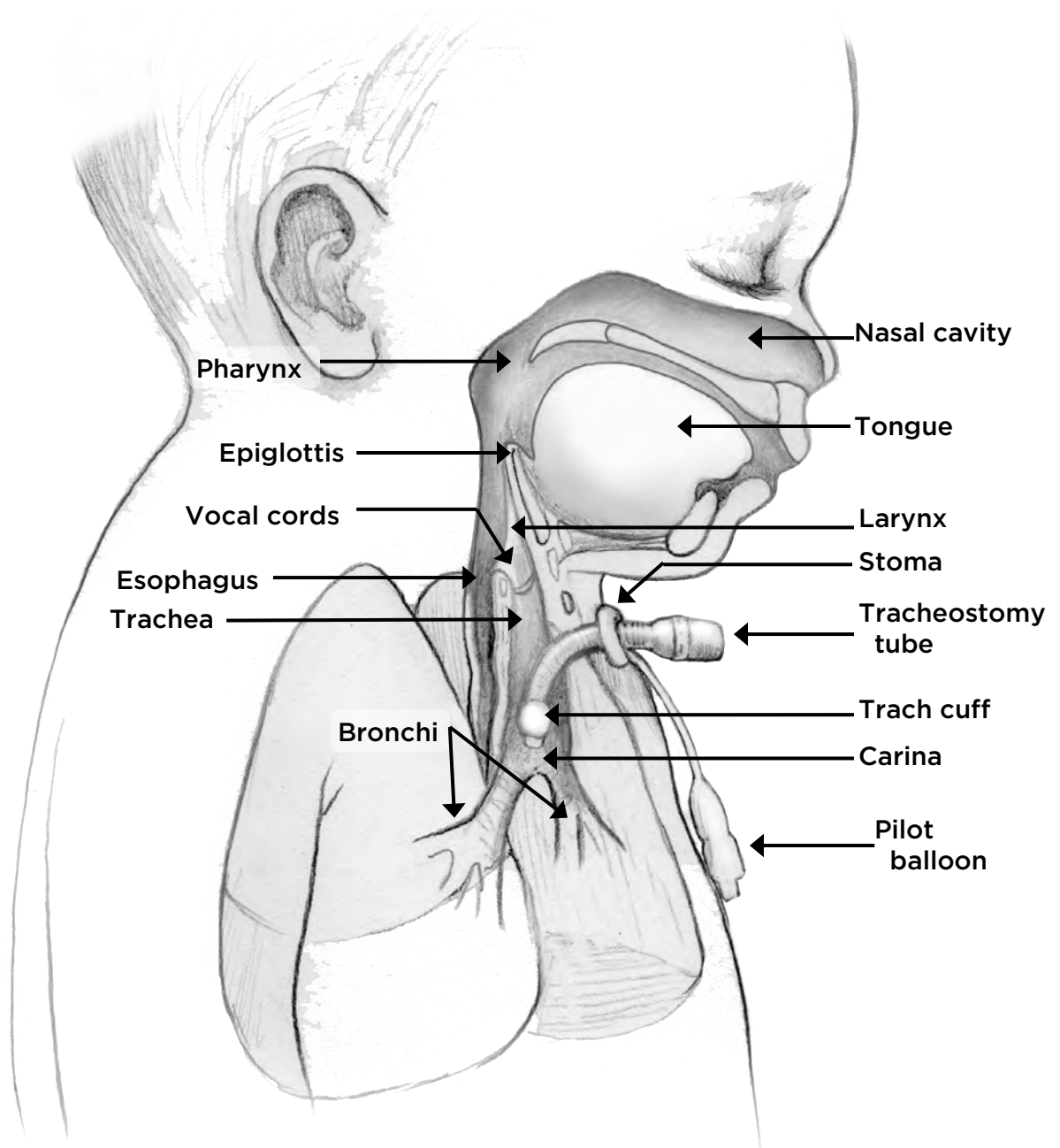


# Tracheostomy Tube Position in an Infant's Upper Airway: Illustration



Seattle Children's offers interpreter services for Deaf, hard of hearing or non-English speaking patients, family members and legal representatives free of charge. Seattle Children's will make this information available in alternate formats upon request. Call the Family Resource Center at 206-987-2201.

This handout has been reviewed by clinical staff at Seattle Children's. However, your child's needs are unique. Before you act or rely upon this information, please talk with your child's healthcare provider.

© 2017 Seattle Children's, Seattle, Washington. All rights reserved.

6/17  
PE2697