



紧急气管管理 (有气管造口的自主意识儿童)

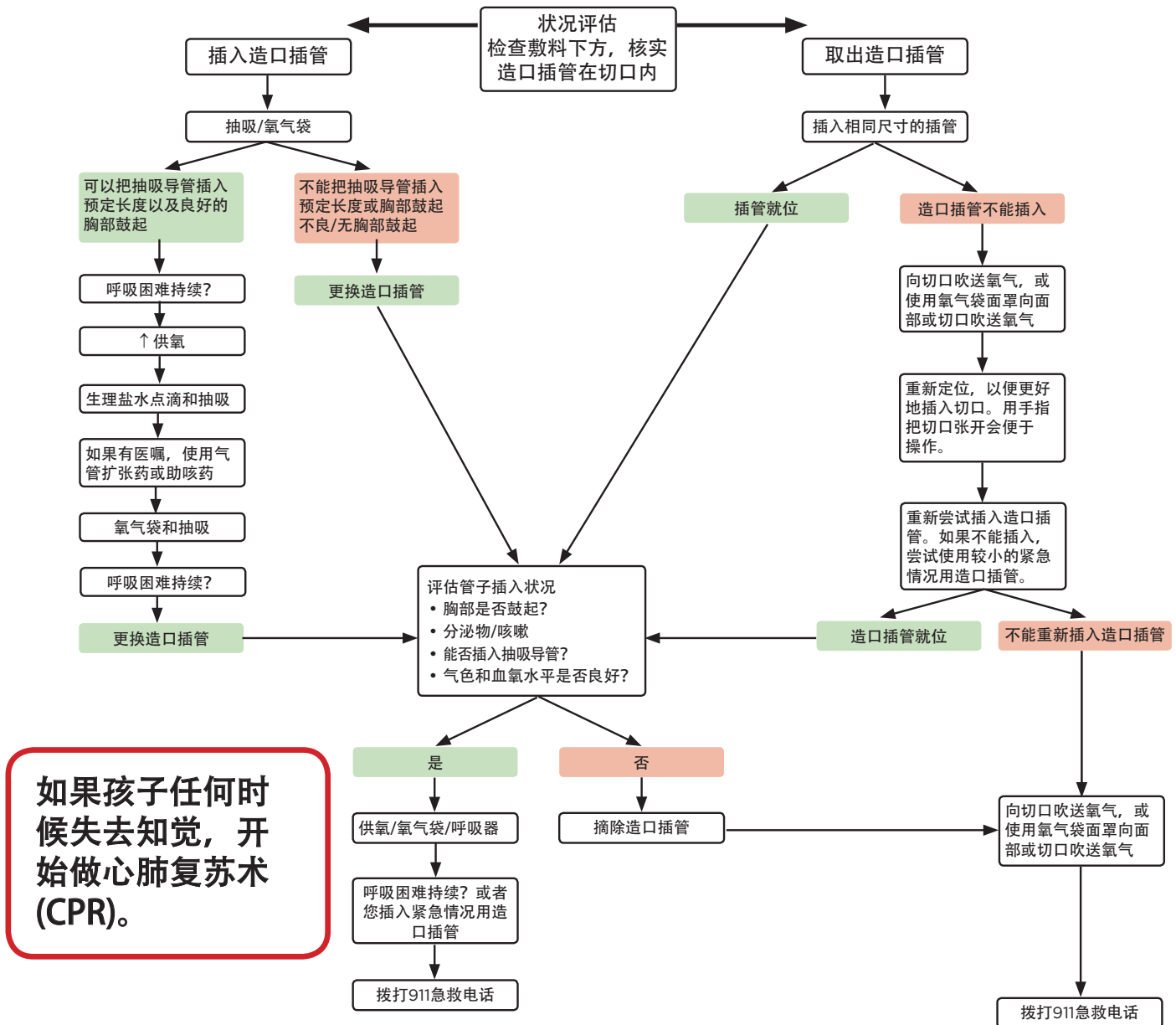
有气管造口的儿童在家中当气管造口被黏液堵塞或脱落时会出现呼吸困难的迹象。

孩子出现呼吸困难迹象

- 呼吸变得困难、急促
- 气色不好, 血氧水平降低
- 胸部鼓起不良或无胸部鼓起
- 造口插管发出哨音或喘鸣音
- 造口插管部位喉音增大
- 躁动/不安

让您的孩子始终随身携带必需用品

- 与您的孩子相同尺寸的气管造口插管
- 小一号的造口插管 (紧急情况用造口插管)
- 注射器 (仅限用于翻边管) 和润滑剂
- 抽吸装置和用品
- 苏醒袋、面罩、切口罩
- 氧气



Emergency Airway Management (Conscious Child with Tracheostomy)

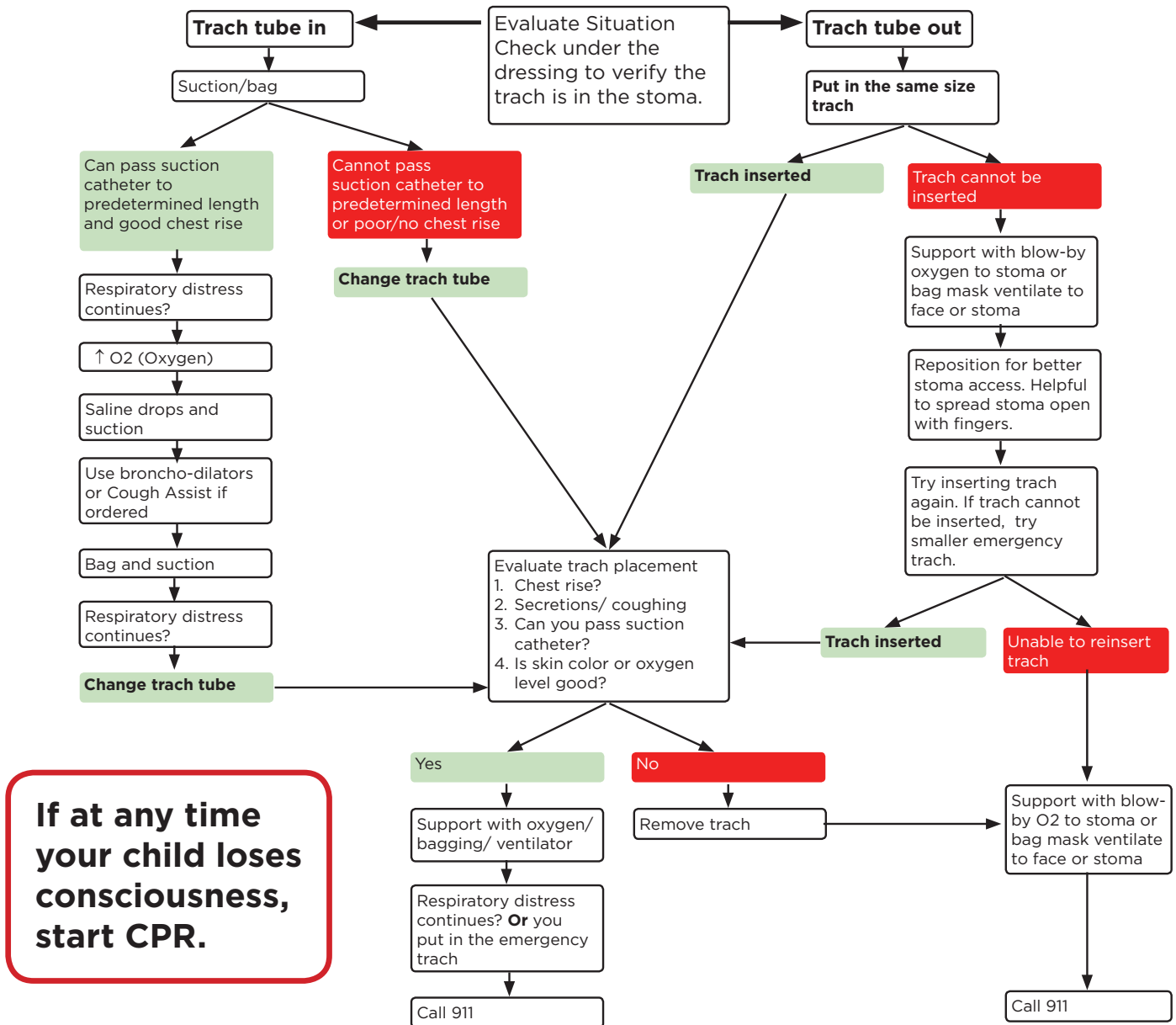
Kids at home with trachs can often have trouble breathing when the trach becomes blocked with mucus or the trach comes out.

Child is showing signs of respiratory distress

- Increased work of breathing, respiratory rate, retractions
- Poor color, drop in oxygen levels
- Poor or no chest rise
- Whistling or wheezy sounds from trach
- Increased vocalization around trach tube
- Agitated/upset

Always have essential equipment with your child at all times

- Tracheostomy tube the same size as your child's
- Trach tube one size smaller (emergency trach)
- Syringe (for cuffed tubes only) and lubricant
- Suction equipment and supplies
- Resuscitation bag, face mask, stoma mask
- Oxygen



If at any time your child loses consciousness, start CPR.

Seattle Children's offers interpreter services for Deaf, hard of hearing or non-English speaking patients, family members and legal representatives free of charge. Seattle Children's will make this information available in alternate formats upon request. Call the Family Resource Center at 206-987-2201.

This handbook has been reviewed by clinical staff at Seattle Children's. However, your child's needs are unique. Before you act or rely upon this information, please talk with your child's healthcare provider.

© 2018 Seattle Children's, Seattle, Washington. All rights reserved.