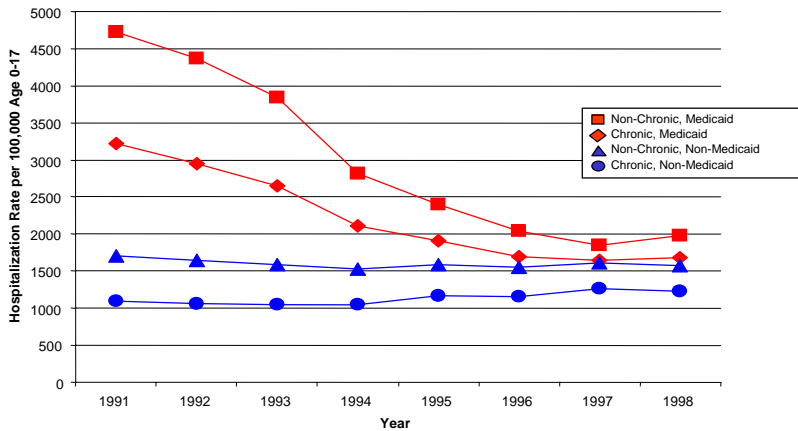


**Children's health care is an inexpensive investment with an enormous pay off.**

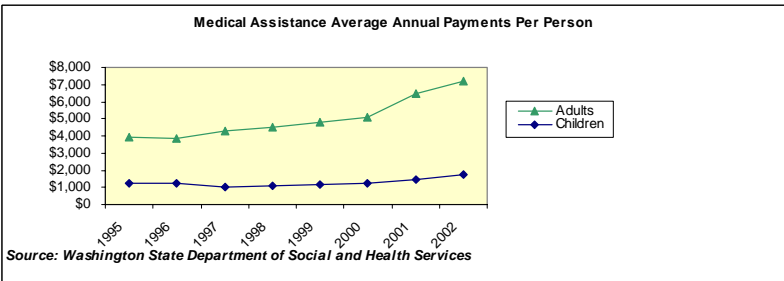
Regular health care, immunizations, and early diagnosis reduce the likelihood of more costly, disabling, or life-threatening children's health needs. Regular preventive care for children enrolled in Medicaid decreases emergency room use and hospitalizations [1-4]. The cost of delaying care is far greater than the cost of covering children.

In the 1990's Washington improved access to health care for children and implemented managed care. These changes resulted in cost-effective, early care for children, and a subsequent dramatic decrease in hospitalization rates.

**Chronic & Non-Chronic Condition Hospitalization Rates by Payer, WA State, Age 0-17, 1991-1998**

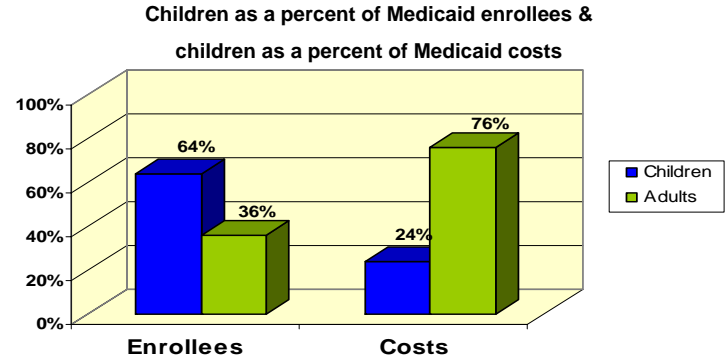


**Children are inexpensive to insure and the cost of insuring children has remained stable for the past ten years.** Children are about \$1700 per year to insure, and adults are about \$7200 per year to insure.



[1] Pediatrics, March 1998.  
 [2] Pediatrics, March 2001.  
 [3] Pediatrics, July 2001.  
 [4] Archives of Pediatrics and Adolescent Medicine, July 2002.

**Children are not driving the health care budget problem.** Children make up 64% of Medicaid enrollees and account for less than 25% of expenditures.



Source: Washington State Department of Social and Health Services

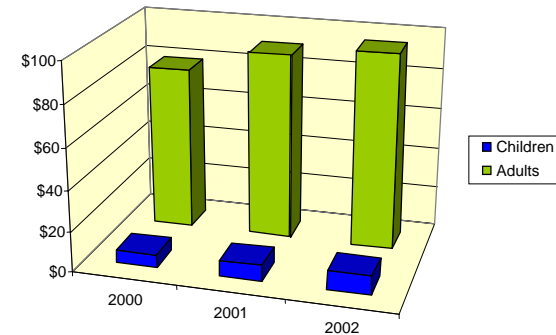
**Access to early and preventive care keeps kids healthy,** and is much more cost-effective than delaying care, and requiring emergent care or hospitalizations.

**Child Health Care Costs for Asthma:**  
**Emergency room and hospitalization versus Physician visit**

	Charges	DSHS Payment
Emergency Room	\$382	\$227
Hospital	\$6,009	\$3,498
Physician Office (fee for service)	\$163	\$100

Source: Washington Chapter American Academy of Pediatrics and Children's Hospital & Regional Medical Center

**Average Monthly Drug Costs Per Eligible Medical Assistance Client**



Source: Washington State Department of Social and Health Services



## **Maintaining the Health of Washington's Children**

For more information, please contact Suzanne Petersen, Director of Community, Government Affairs and Advocacy at (206) 987-2125 or [suzanne.petersen@seattlechildrens.org](mailto:suzanne.petersen@seattlechildrens.org)