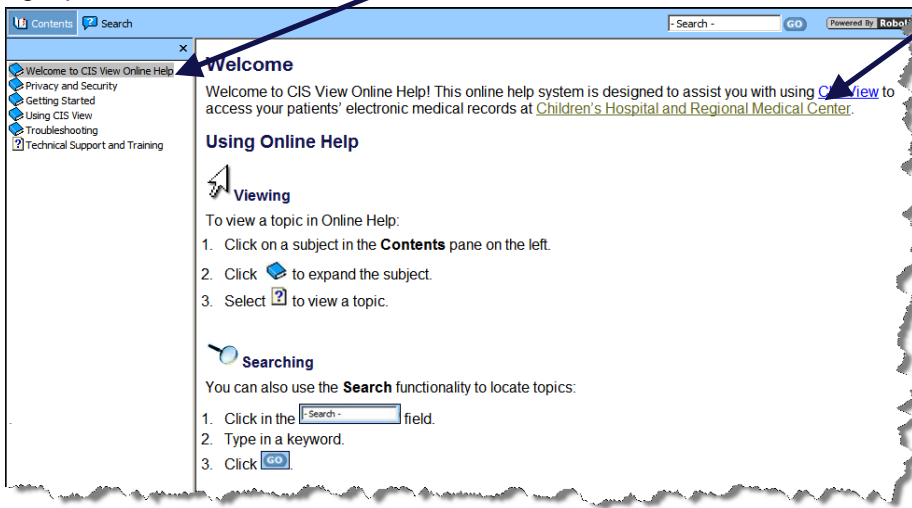
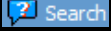


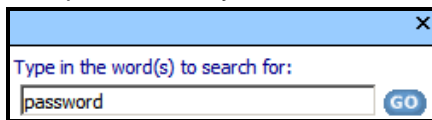
Online Help for Children's Care Gateway



Online Help is designed to assist you while using the applications at Children's Care Gateway. You must log on to an application to access its associated help system.

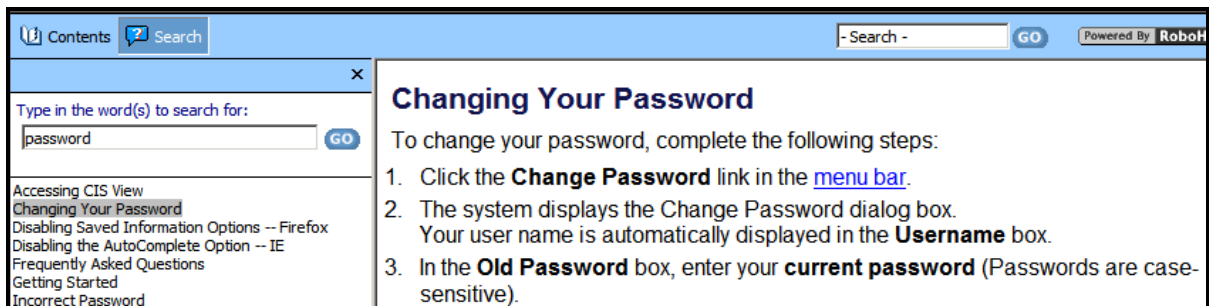
1. Go to <http://gateway.seattlechildrens.org>.
2. Logon to CIS View or PACS Web.
3. Click the **Online Help** link in the Menu bar in CIS View or click the **Getting Started** tab in PACS Web.
4. Online Help launches with the **Table of Contents** displaying in the left pane and **related text** in the right pane.



5. The fastest way to locate a topic is to click on the  **Search** button in the upper left corner. Type in the topic for which you need more information then click **Go**.



6. Alternatively, select a subject in the **Contents** pane on the left. Click  to expand the subject and select  to view a topic.
7. The results of your search display in the left pane under the Search field. Click on a topic that you wish to view.

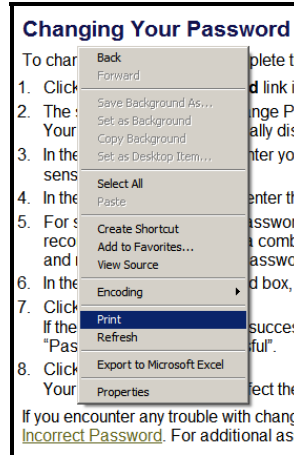
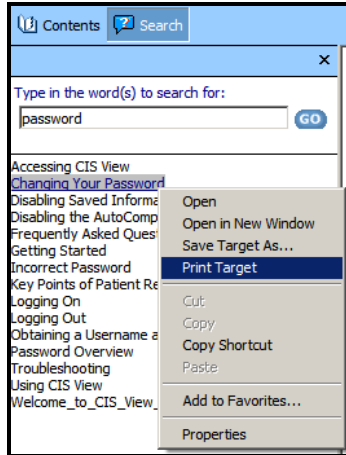


8. If a search generates too many results, try using more specific terms.



Note: The partial search feature in Online Help does not always work; therefore, the best way to find a topic is to type in the entire word in the search field (e.g., “password” instead of “pass”).

9. Print a topic either by right-clicking on the name of the topic in the left pane and selecting **Print Target** or by right-clicking on the topic in the right pane and selecting **Print**.



We welcome your feedback about Online Help for Children’s Care Gateway. Let us know if there are topics that you could not find and we will try to include them in future updates.

Send your comments or questions to:

IS Training
Children’s Hospital and Regional Medical Center
6901 Sand Point Way N.E.
Seattle, WA 98105

Phone: (206) 987-1999
E-mail: istraining@seattlechildrens.org



Published November 2007

4800 Sand Point Way N.E.
Seattle, WA 98105-0371

(206) 987-2000 (Voice) (206) 987-2280 (TTY)

www.seattlechildrens.org