

# Review of Newspaper Clippings for 2010

Drowning Prevention Network  
October 4, 2010



Public Health Always Working for a  
Safer and Healthier Washington

## Newspaper Clipping Data

- Provides the who, what, when, where & why of submersions not available in other sources
- Often includes follow-up of from initial report
- # of submersion incidents represents drowning deaths and drowning survivals. Previous years have included information on “near miss” hypothermia victims.

# Number of Submersions

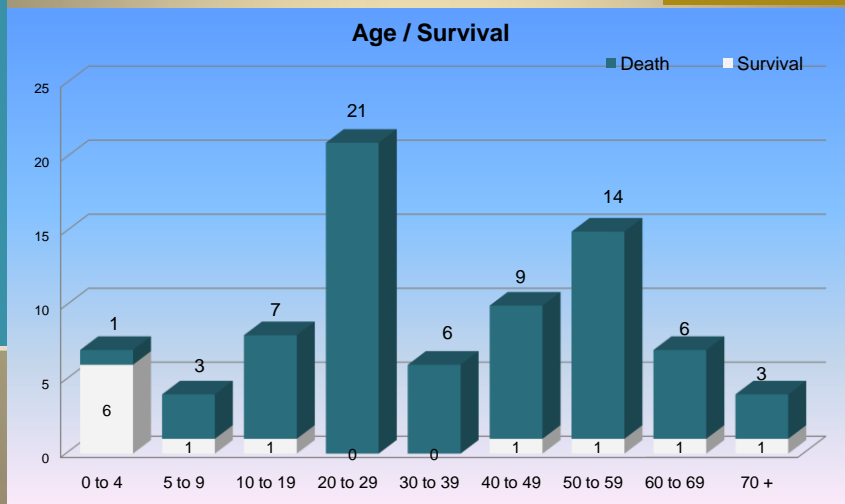
Comparisons from Previous Years

Year	Total Submersions	Survival	Deaths
2010	83	12	71
2009	103	28	75
2008	127	40	87
2007	173	70	103
2006	141	50	91



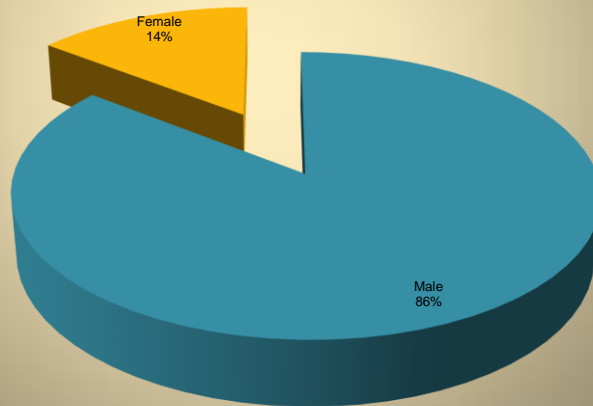
Public Health Always Working for a Safer and Healthier Washington

# Total Submersions by Age 2010

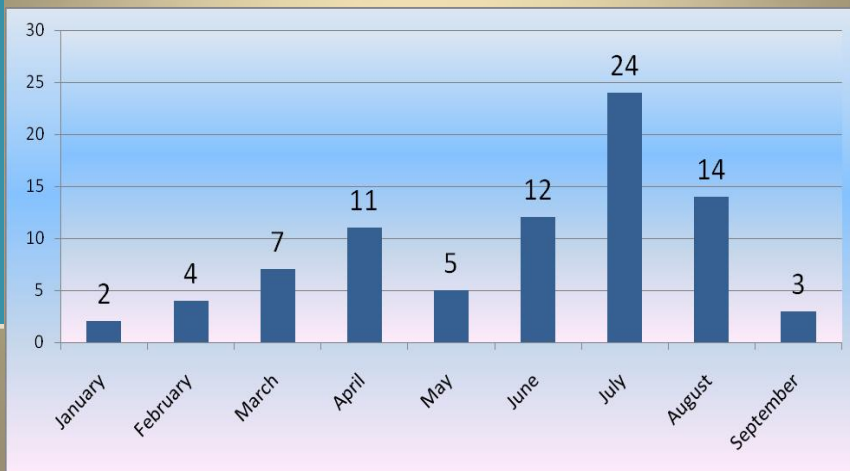


## Submersions Male/Female (%)

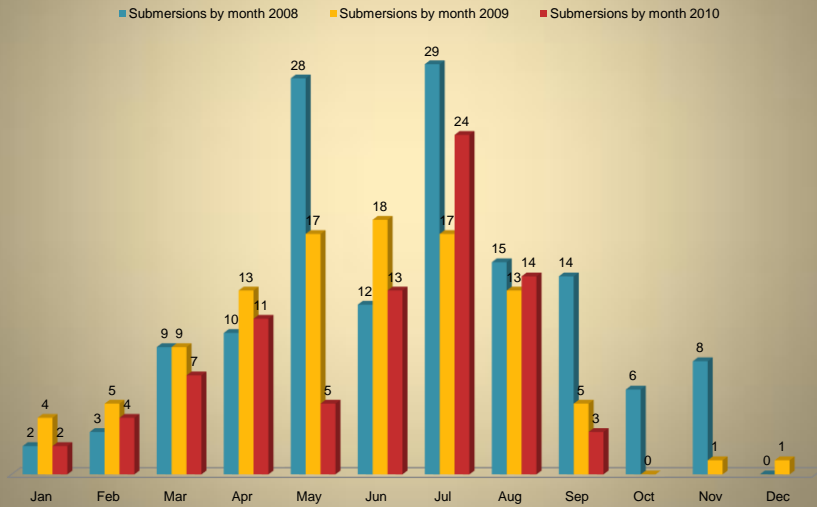
Submersions Male/Female



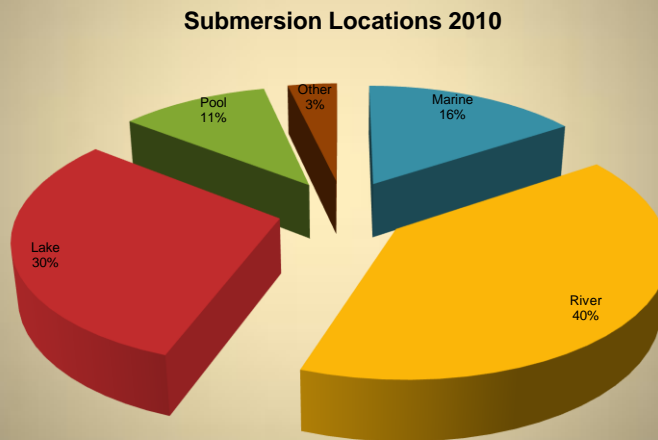
## Highest Months of Submersions 2010



# Comparing monthly submersions 2008-2010



# Locations of Submersions 2010



## Comparing Location of Submersion Reports 2005-2010 Newspaper Clippings

Location	2005	2006	2007	2008	2009	2010	Average % 2005-10
Marine	26%	34%	26%	23%	19%	16%	24%
River	33%	34%	37%	46%	46%	40%	39%
Lake	32%	23%	28%	16%	28%	30%	26%
Pool	7%	6%	2%	8%	7%	11%	7%
Bathtubs, Drainage, Canals	2%	3%	7%	7%	6%	3%	4%

## Submersions West/East WA 2010

West = 59% (49)



East = 41% (34)



## Age Range of Submersions 2005-2010

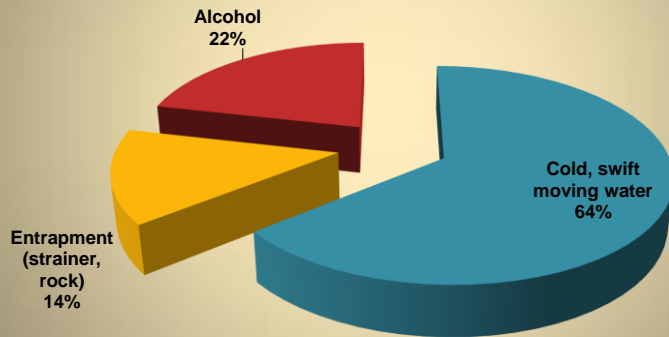
Blue = Survival Red = Drowning	0-4	5-9	10-19	20-29	30-39	40-49	50-59	60-69	70+
	2005	8 8	5 2	14 12	3 13	6 12	4 16	5 11	2 1
2006	8 6	1 5	21 12	4 23	4 13	5 16	7 14	0 2	0 9
2007	4 8	2 1	19 19	9 16	5 12	4 14	3 8	3 5	1 5
2008	6 10	1 5	7 11	6 13	3 11	1 12	2 5	2 8	1 8
2009	7 7	3 0	8 10	6 26	0 11	2 10	0 3	2 2	0 6
2010	6 1	1 3	1 7	0 21	0 6	1 9	1 14	1 6	1 3
2005-2010	6.5	2.2	11.7	4.7	3.0	2.8	3.0	1.7	0.8
Average	6.7	2.7	11.8	18.6	10.8	12.8	9.2	4.0	6.7

## River and Creek

- Most common locations:
- Columbia River 9
- Yakima River 3
- Spokane 3

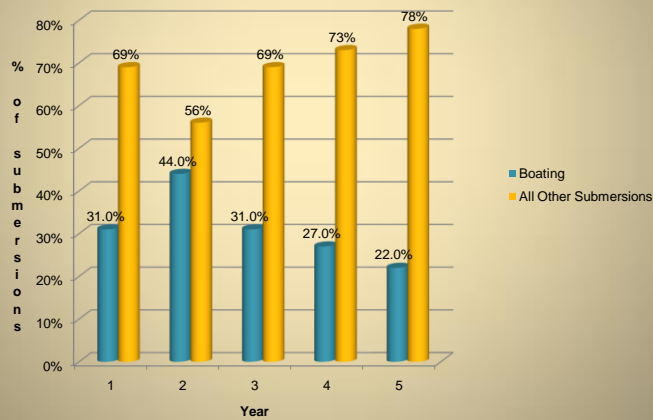
# River Submersions Washington 2010

## Contributing Factors for River Submersions 2010



# Boating Related Submersions 2006-2010

## Boating Related Submersions



## Boating Submersions 2010

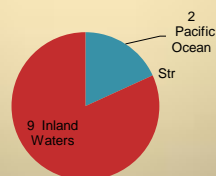
- Fishing boat: 5 victims: 3 victims on one boat on river w/ 30 mph winds & swells swamped boat; 2 victims on lake while fishing & boat capsized
- Canoes: 5 victims: Capsized rivers & lakes
- Rafts: capsized in rivers
- One row boat struck by ski boat victim killed
- One victim died launching boat on Inland Water
- One overloaded paddle boat capsized

## Marine Waters

### Rip Currents & Sneaker Waves 2005-10

	2004	2005	2006	2007	2008	2009 & 2010
<b>Submersion</b>	<b>14</b>	<b>9</b>	<b>2</b>	<b>10</b>	<b>2</b>	<b>0</b>

**Marine Submersion Locations**



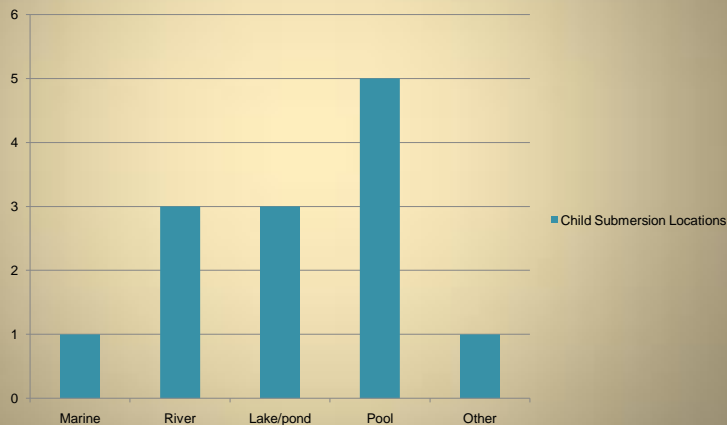
## Pool Submersions - 9

- 3 at family pools
- 6 at regulated pools
- Supervision a factor with several submersions



## Child Submersions (< 12 yrs) 13 Victims

Child Submersion Locations



## Drowning at Park Areas

- 8 submersions all drownings
- Pattern in most were swimming with friends and family, got tired and disappeared.
- Hypothermia was suspected contributing factor for several
- All were male



## Other Incidents Not Reported

- EMS swift water rescue teams rescued 10 people in 3 different incidents in mid-June on one weekend on the Cedar and Green Rivers. Some were hypothermic. Most had been trapped by fallen trees in the rivers.
- Kayaker towed 11 yr old girl to other side of Rattlesnake Lake when she tired and couldn't get further.

## Saved by a Spider Bite (& an observant tug boat captain)

- 69 y/o male shrimp boating with a friend in a 12 ft boat & 2 hp motor on the inland waters east of Whidbey Island.

## Questions or Comments?

