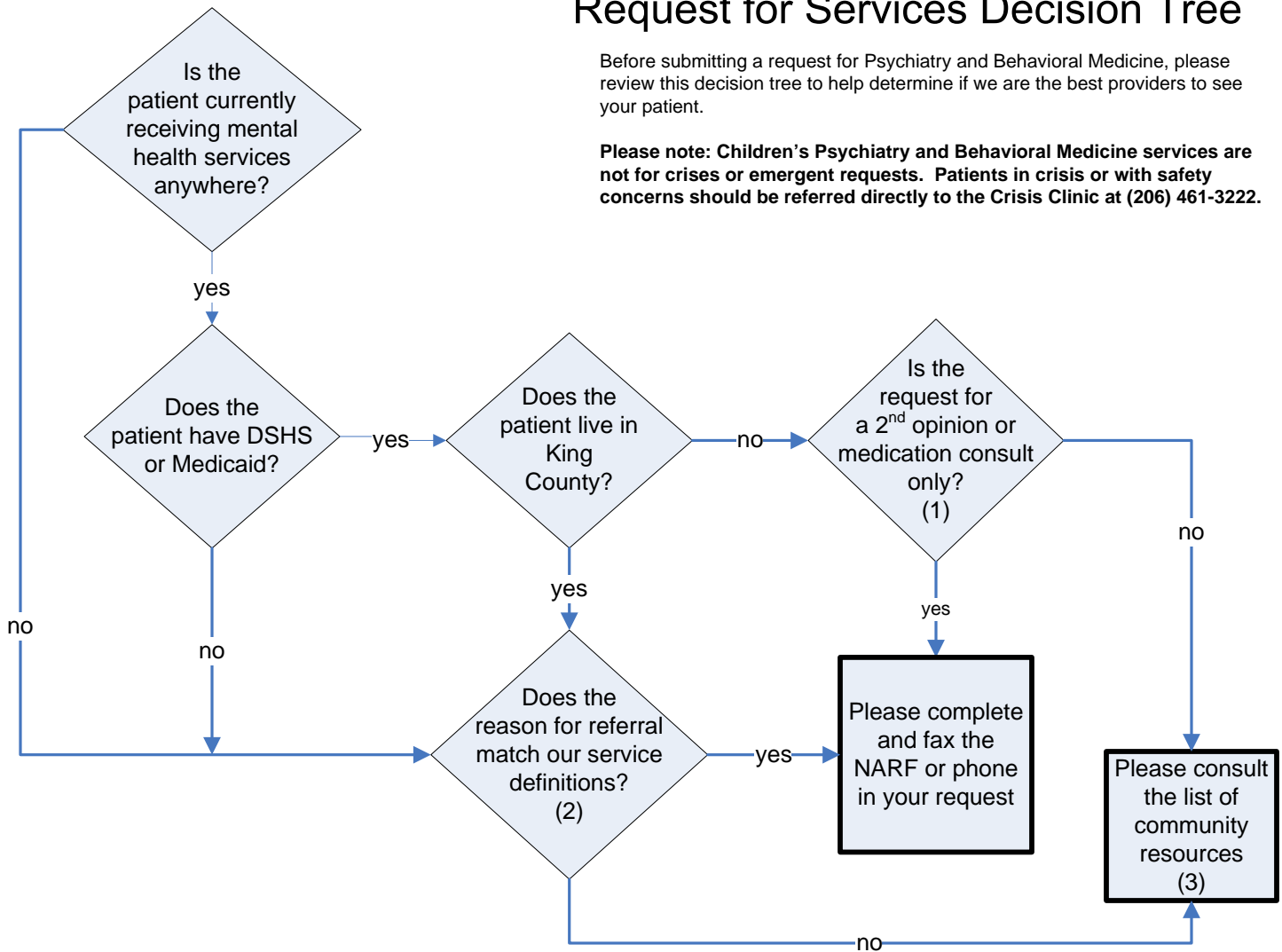


Psychiatry and Behavioral Medicine Request for Services Decision Tree

Before submitting a request for Psychiatry and Behavioral Medicine, please review this decision tree to help determine if we are the best providers to see your patient.

Please note: Children's Psychiatry and Behavioral Medicine services are not for crises or emergent requests. Patients in crisis or with safety concerns should be referred directly to the Crisis Clinic at (206) 461-3222.



(1) Medicaid requires that patients receive mental health care in their county of residence unless the appointment is for a second opinion or medication consult only. If the patient lives outside of King County and you are not requesting those services, please refer the patient back to his current behavioral health provider or regional services network.

(2) Please see our service definitions which describe our focus areas.

(3) Community resources are available to serve your patient. Please use the list of community resources to help identify appropriate service options.