

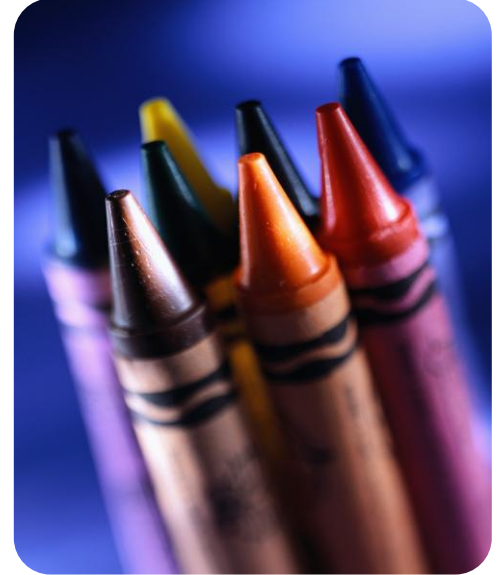
Child Life Department Wish List

Greatest Needs

Crayola® crayons; Play Doh; fuzzy coloring posters; small Lego sets; Brio trains (no track); nail polish; coloring books; arts and crafts kits; playing cards; tactile toys for all ages; Disney/Pixar DVDs; PG-13 DVDs; gift cards; Spanish, Vietnamese and Russian videos, books and music.

Other Priority Needs

CD Players, CDs (lullabies, relaxation, all ages), snap-together model kits, stuffed animals, tickets to local attractions and events, new harmonicas (in box), Nintendo DS and games (teen- and puzzle-oriented), and teen magazine subscriptions (fashion, cars, video games).



Infants and toddlers

Light, sound and pop-up toys; mirrors; links; rattles; teething rings; board books; sound books; sorting/ stacking toys; busy boxes; washable squeeze toys; beginning cars and trucks; and Fisher-Price Little People play sets. ** No infant gyms please. **

Pre-school & school age

Thomas the Train; plastic animals and dinosaurs; superhero action figures; Legos/Duplos; Etch-A-Sketch; K-Nexs; Nerf balls; Hotwheels; sturdy plastic cars and trucks; I Spy books; and Beanie Babies.

Teens

X-Box, Wii, and Playstation 2; teen rated games; handheld games; sport team caps and t-shirts; journals and writing supplies; bath and beauty gift sets; manicure supplies; \$5 and \$10 gift cards (music, book stores, movies, restaurants, Target, etc.)

Arts and crafts

Watercolor supplies (kits, pencils, paint and paper); sketch books; oil pastels; glitter pens and glue; fabric markers; stickers; Fimo or Sculpy clay; beading supplies; and Fun Foam kits.

Crayola®

Model Magic®, activity books, Color Wonder®, colored pencils, crayons, markers and paints.

Self-contained craft kits

Bead animals; friendship or bead bracelets; sand art; paper projects; stamping.

Games

Uno, Phase 10, playing cards, chess, Apples to Apples, Life, Sorry, Jenga Extreme, Sequence, Trouble, Mancala, Monopoly, Connect Four, Battleship, poker sets, Guess Who and Cranium.

We appreciate financial donations of any size as they allow us to offer enriching activities to patients and families.

To make a financial donation, make checks payable to:

Seattle Children's Hospital, Child Life Department
Seattle Children's Foundation, S-200, PO Box 50020
Seattle, WA 98145-5020.

For safety and infection control reasons, please donate only new items that are washable, nontoxic and not easily broken.

- **Please** no large metal trucks or toys.
- **Please** do not wrap donations.
- **Please** no toys that represent violence.