

SUSPECTED CHILD ABUSE AND NEGLECT

This summary is intended to provide only minimal information. For detailed procedures and information see the *Family Violence Policy and Procedures; Suspected Child Abuse and Neglect (Red Book)* that is available at all nursing stations, clinics and in the emergency room. It can also be found online on CHILD.

Management of child abuse and neglect at Children's is based on individual clinician evaluation and interdisciplinary management. With any injury, think not only what is the injury, but also how it occurred. As with meningitis, make and document a dual diagnosis of illness and etiology. Diagnosis of abuse or neglect is based on injuries inconsistent with history or known accidental mechanisms. Document thoroughly and precisely in writing, drawings, photos and appropriate labs and x-rays. Use the SCAN consultants for questions of appropriate evaluation. Statements of patient and caretakers should be carefully recorded. Document questions asked, responses and emotional content of the interactions.

If a child is in "imminent danger," clinicians can take physical custody of the child for 72 hours by placing a "medical hold". An immediate report should be made to CPS and/or law enforcement, if this option is used. Security or the police may need to enforce your custody order. Use this sparingly. (See *Child Abuse and Neglect Policy and Protocols; Medical Hold Protocol*).

Resources available to clinicians include the following:

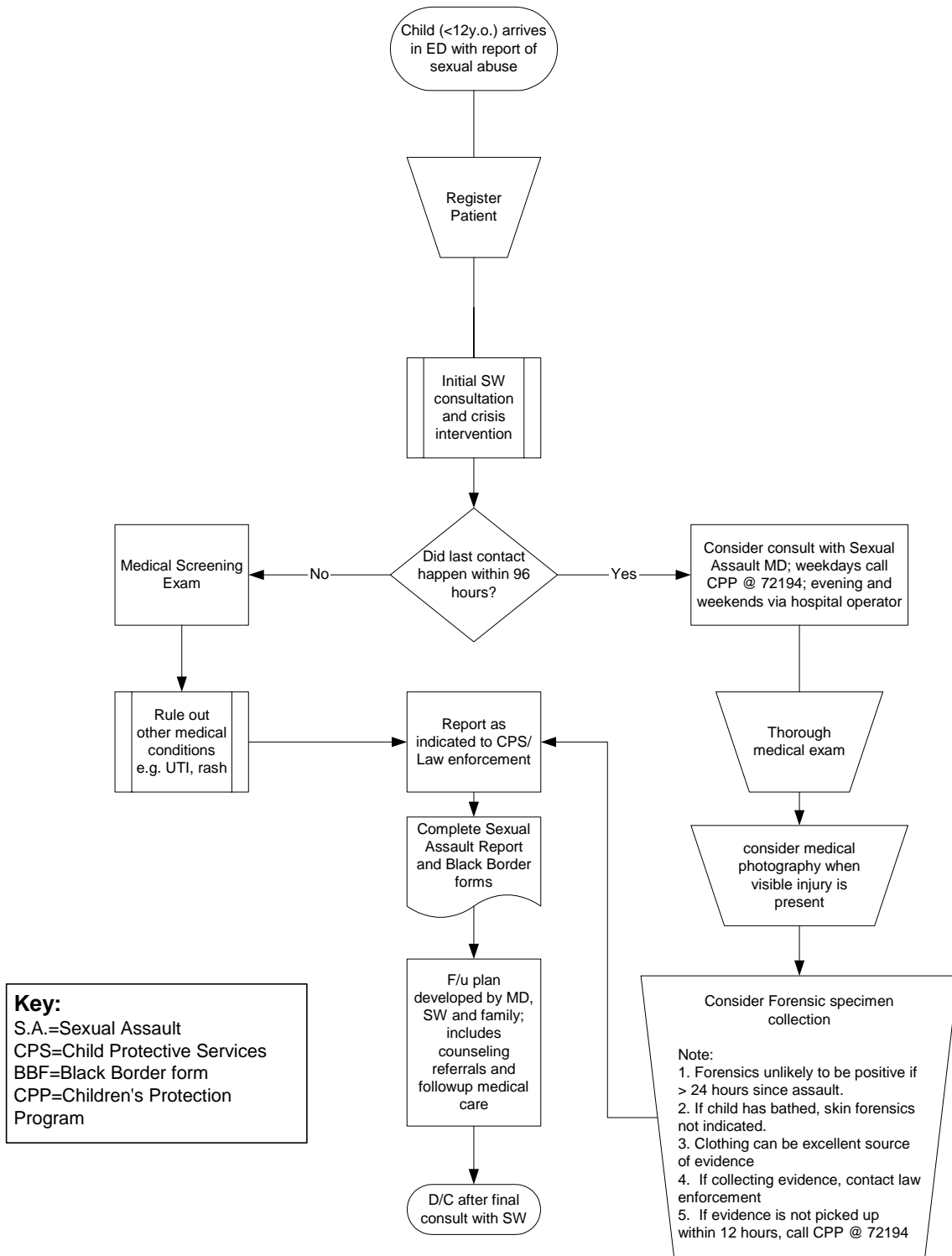
- SCAN (suspected child abuse and neglect) Consultants are available to clinicians 24 hours a day, seven days a week when requested by the resident or attending. They can be reached during weekdays by calling 206-987-2194 and during evenings and weekends, through the hospital operator. These consultants can be used for questions of diagnosis or procedure.
- Social Work should be consulted 24/7 on all cases of suspected abuse or neglect. During weekdays, Social Work can be reached by calling 206-987-2760; after hours and on weekends, contact the hospital operator.
- The Children's Protection Team is a hospital-based multi-disciplinary advisory group in the area of child maltreatment. They will aid in family interaction, liaison with agencies including law enforcement and Child Protective Services (CPS) and complex, difficult-to-determine situations. There are two types of cases that must be brought to the team as soon as possible. These are:
 - Concerns of an allegation of child maltreatment by a Children's staff member
 - Concerns of Pediatric Condition Falsification (Munchausen Syndrome by Proxy)

During weekdays the team can be accessed through the Children's Protection Program by calling 206-987-2194. After hours and on weekends, contact the hospital operator and request a SCAN Consultant. (Please see attached list for team membership)
- Sexual assault cases should be managed according to the *Sexual Assault Child or Adolescent Protocols contained in the Suspected Child Abuse and Neglect Policy and Protocols*. Sexual Assault Specialists are available to provide consultation 24 hours a day, seven days a week. To request a consult:
 - During weekdays, contact the Children's Protection Program at 206-987-2194

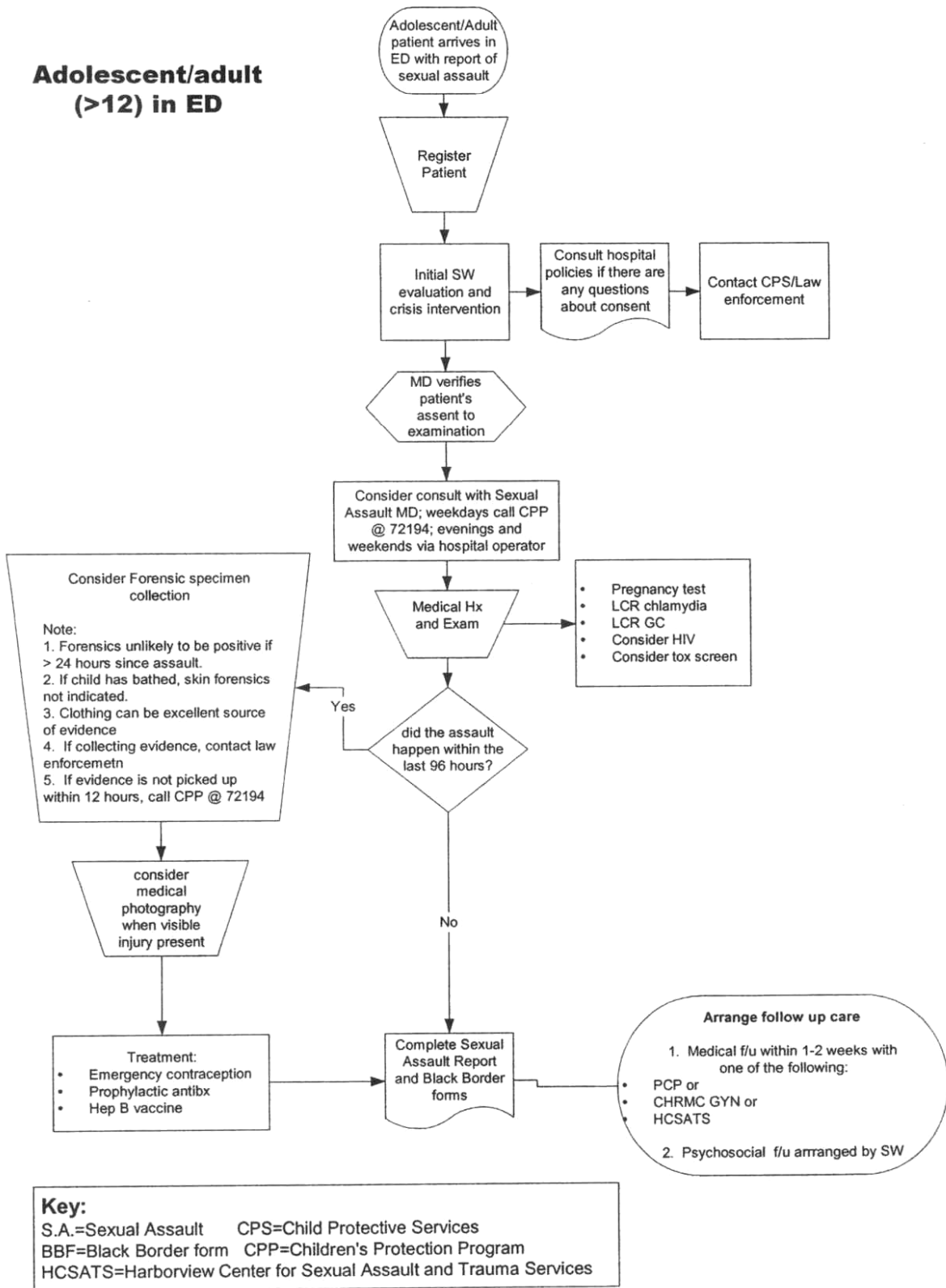
- After hours and on weekends, contact the Children's operator and request a sexual assault attending for a phone consultation

If subpoenas are received, do not go to court as indicated. Contact the attorney listed on the subpoena, a SCAN Consultant and the hospital attorney to find out what is really needed of you.

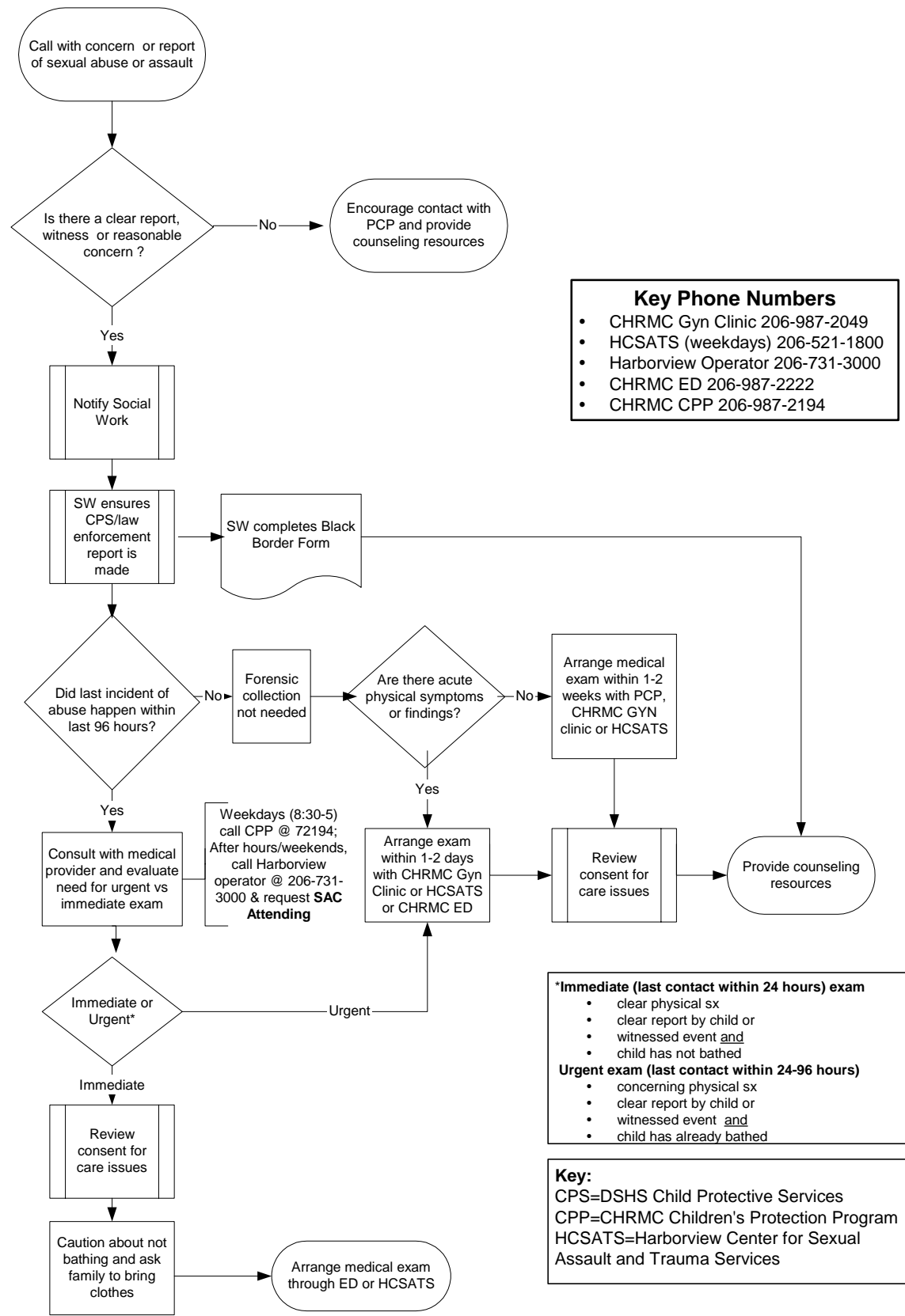
Child (<12) in ED



Adolescent/adult (>12) in ED



Sexual Assault Flow Sheet—Telephone Triage



Sexual Assault Flow Sheet—Telephone Triage

(This page intentionally left blank.)

**CHILDREN'S HOSPITAL AND REGIONAL MEDICAL CENTER
CHILDREN'S PROTECTION TEAM (CPT)**

The Children's Protection Team (CPT) is a service of the Children's Protection Program.

Children's Hospital's Children's Protection Team (CPT) is a multi-disciplinary group of specialists in the area of child maltreatment.

The team:

- Formulates hospital-wide policy regarding abuse, neglect, sexual abuse and domestic violence issues
- Assures quality oversight of the identification, evaluation and management of child maltreatment for the medical center,
- Facilitates internal and external child maltreatment management,
 - a. Concurrently reviews cases with direct care providers
 - b. Acts as a bridge/liaison between and within internal and community systems
- Provides direction for educating staff on issues pertaining to child maltreatment,
- Promotes research in child maltreatment identified through CPT processes, and,
- Provides a role in greater community prevention and advocacy.

The CPT is a resource for any questions regarding child abuse and/or neglect, including whether or not a Child Protective Service (CPS)/law enforcement referral is appropriate. The team can provide assistance in making appropriate additions or changes in the medical and social evaluations for child maltreatment, aid in collaborating with CPS, law enforcement, etc., and discuss discharge options. The team meets weekly on Tuesdays from 11:30 a.m. to 12:30 p.m. 24-hour consultation is also available. The Children's Protection Program can be reached weekdays, 8:00 am to 4:30 pm, at 206.987.2194.

TEAM MEMBERS

CAROL JENKINS, M.Ed., Chair of CPT

Children's Protection Program
Phone: 71005 Mail: M1-7

MAUREEN WALUM, CPS LIASON

Phone: (206) 691-2336

ANN ONGERTH, LICSW

Social Work
Phone: 71175 Mail: M1-7

JIM SAWYER

Security Services
Phone: 76213 / 72030 Mail: 5H-8

JACKIE BRANDT, LICSW

Social Work
Phone: 71193 Mail: M1-7

JEFF SCONYERS

General Counsel
Phone: 72044 Mail: T-0111

DEBRA GUMBARDO, MS, RN

Inpatient Psychiatry
Phone: 71855 Mail: M1-1

KAREN TALIESIN

Pastoral Care
Phone: 74363 / 73222 Mail: G-1032

KEN FELDMAN, MD, Medical Director of CPT

Odessa Brown (OBCC)
Phone: 77248 Mail: M1-7
Pager: 469.6676 Fax: 987.7206

NAOMI SUGAR, MD

CHPMC/Harborview HCSATS
Phone: 521.1800 Mail: M1-7
Pager: 995.2530 Fax: 521.1814

ORLANDO MANAOIS, LICSW

Emergency Department, Social Worker
Phone: 74665 Mail: 6F-3

KIM KORTE, MA, CCLS

Child Life Manager
Phone: 74333 Mail: 2C-1

RUTH BENFIELD

Administration
Phone: 72012 Mail: T-0111

RICHARD SHUGERMAN, MD

ED & House Staff Liason
Phone: 72688 Mail: G-0061

(This page intentionally left blank.)