

## Autism 205 Inclusion: What's Working and What's Next? *A Panel Discussion*

Class will begin at 7 p.m. PDT

# Topics & Question — “what gives you hope?”

- **Jobs & Training**
- **Relationships & Sexuality**
- **Community Engagement**
- **Welcoming Inclusion**

# Host and Panelists



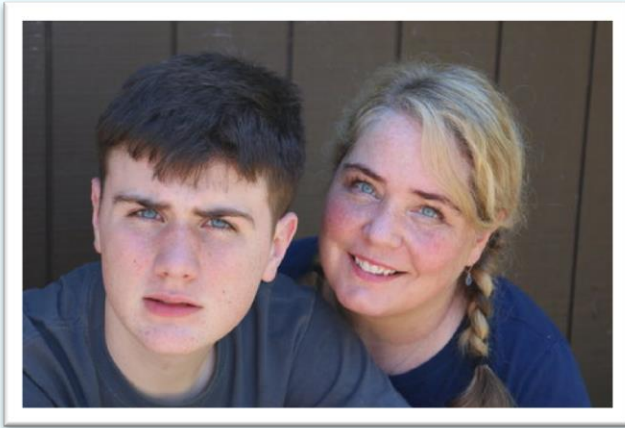
## Kimberly Corrigan

*U.S. Affiliate for Earth Charter International (UNESCO)*

Steering Committee [Welcome Inclusion \(WIN\)](#)

Board of Directors [Washington Autism Alliance & Advocacy](#)

Athlete Leadership Liaison, Special Olympics Washington



## **Katrina Davis**

*Family Advocate, Seattle Children's Hospital*

Kat Davis is a mother of two amazing children and a career advocate in family resources and social services.

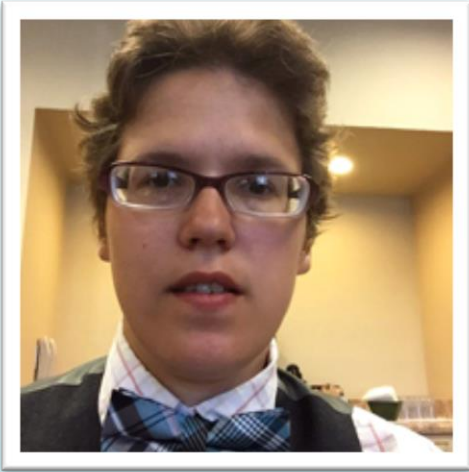


## **Kevin Daniel**

*Senior Director of Recruiting & Employment,  
Lighthouse for the Blind*

President, WA State Business Leadership Network

Head Coach, Seattle S. King County Sluggers baseball



## Ivanova Smith

*Self-advocate, Civil Rights & Community Leader, and Mother*

Vice President, Student Disability Advocacy  
Board of Directors, Washington Autism Alliance and Advocacy  
LEND Fellow, University of Washington



## Rachel Nemhauser

*Supervisor, Parent to Parent Program  
The Arc of King County*

Parent of Nate, 13-year old son with Autism  
Rachel's Blog: <https://nemhouse.com/>