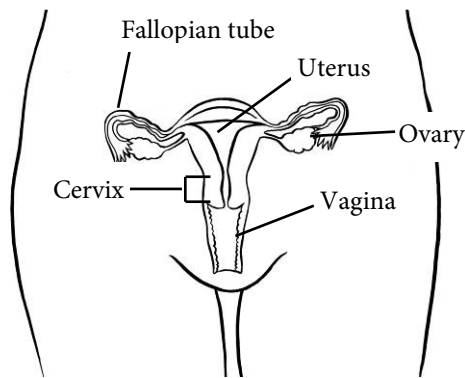
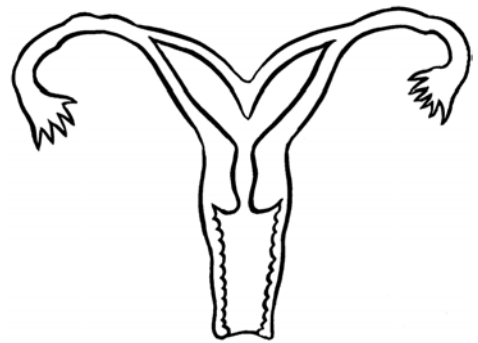


# Drawings of the Female Reproductive Organs

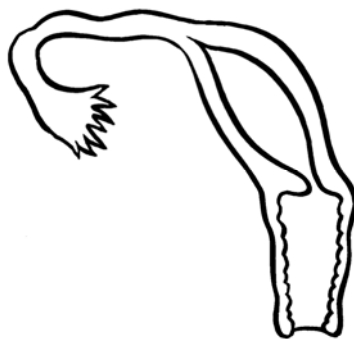
## Developmental (Congenital) Differences



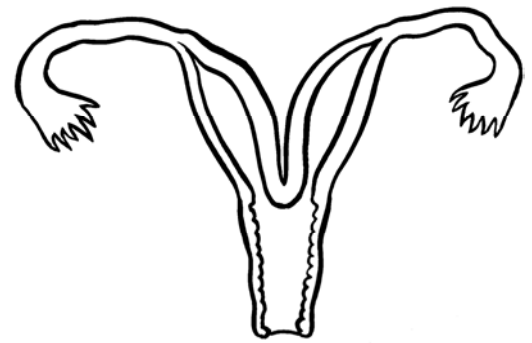
**Normal Uterus**



**Bicornuate Uterus**



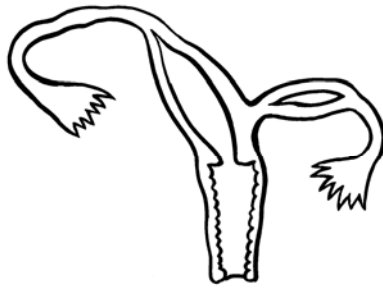
**Unicornuate Uterus**



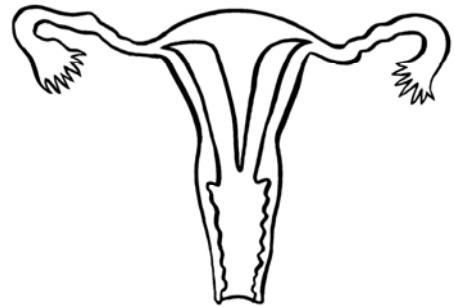
**Didelphys Uterus**

Illustrations of the Female Reproductive Organs: Developmental differences

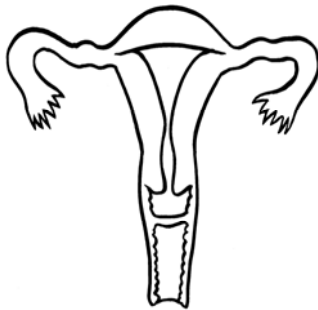
---



**Unicornuate uterus with non-communicating horn**



**Uterine Septum**



**Transverse Vaginal Septum**



**Longitudinal Vaginal Septum**



**Vaginal Agenesis with Obstructed Uterus**



**Vaginal Agenesis with obstructed uterus (side view)**

**To Learn More**

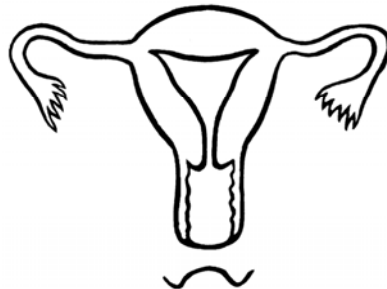
- Adolescent Gynecology  
206-987-3005
- After hours on-call OB/GYN  
206-987-2000
- Ask your child's healthcare provider
- [www.seattlechildrens.org](http://www.seattlechildrens.org)



**Unicornuate uterus with vaginal agenesis**



**Stretching the vagina with dilation**



**Distal vaginal agenesis**



**Vaginal agenesis without uterus**

**Free Interpreter Services**

- In the hospital, ask your child's nurse.
- From outside the hospital, call the toll-free Family Interpreting Line 1-866-583-1527. Tell the interpreter the name or extension you need.
- For Deaf and hard of hearing callers 206-987-2280 (TTY)

---

Seattle Children's offers interpreter services for Deaf, hard of hearing or non-English speaking patients, family members and legal representatives free of charge. Seattle Children's will make this information available in alternate formats upon request. Call the Family Resource Center at 206-987-2201.

This handout has been reviewed by clinical staff at Seattle Children's. However, your child's needs are unique. Before you act or rely upon this information, please talk with your child's healthcare provider.

© 2010 Seattle Children's, Seattle, Washington. All rights reserved.

---