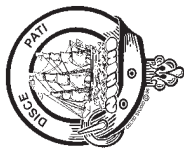


Non-Profit Organization
U.S. Postage
PAID
Seattle, WA
Permit No. 8225



M/S — S-219
PO Box 5371
Seattle, WA 98145-5005



Online Registration:
seattlechildrens.org/outreach

**Attention:
Nurses
Healthcare Professionals**

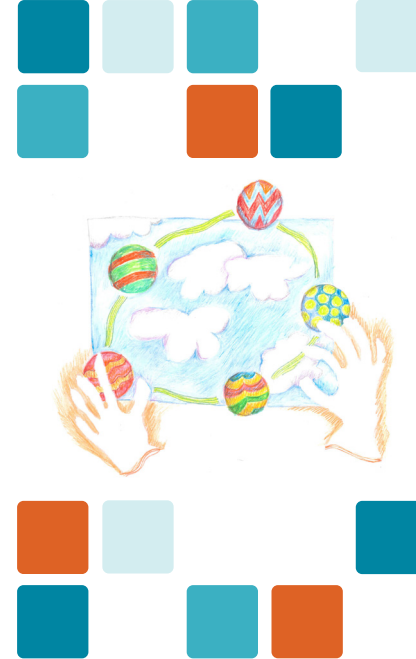
© 2017 Seattle Children's, Seattle, Washington. All Rights Reserved.

SPONSORED BY SEATTLE CHILDREN'S OUTREACH EDUCATION, THE DIVISION OF DEVELOPMENTAL MEDICINE AND THE SEATTLE CHILDREN'S CENTER FOR CHILDREN WITH SPECIAL NEEDS

38th Annual Duncan Seminar

The Juggling Act

Developmental Disabilities, Behavioral Challenges and Mental Health



Friday, March 31, 2017

8 AM - 4:30 PM

Wright Auditorium

Seattle Children's Hospital

4800 Sand Point Way NE, Seattle, WA 98105

At this one-day conference, participants will gain an understanding of the current aspects of child development and family outcomes for children with developmental disabilities, behavioral and mental health challenges.



Course Objectives

At the completion of this seminar, participants will be able to:

- Gain greater insight into the unique family perspectives associated with parenting a child with developmental disabilities and behavior challenges.
- Understand how to integrate medical and psychiatric considerations to maximize adaptive functioning in people with disabilities.
- Review the epidemiology of mental health disorders in intellectual and developmental disabilities and approaches to assessment and treatment.
- Understand the bio-behavioral interaction that can lead to disruptive behavior in individuals with intellectual and developmental delays.
- Review best practices in assessment, treatment approaches and troubleshooting specific feeding problems seen in children with developmental disabilities.
- Discuss interdisciplinary treatment approaches for individuals with developmental disabilities and mental health disorders.

Who Will Benefit Most from Attending This Event

Physicians, nurses, SLPs, OTs, PTs, nutritionists, educators, parents, social workers and other healthcare professionals caring for children with neurodevelopmental disabilities and their families

Directions, Parking, Accessibility

- Directions and parking information can be accessed at seattlechildrens.org/outreach.
- To request special dietary or other accessibility accommodations, contact Lynna Song at 206-987-5318, Outreach Education at 206-987-3200 or e-mail outreacheducation@seattlechildrens.org.



About the Duncan Seminar

The **Duncan Seminar** is an annual interdisciplinary conference focused on the care of persons with physical disabilities. It recognizes the major contributions of Dr. William Duncan, orthopedic surgeon, to comprehensive interdisciplinary approaches to cerebral palsy in the Pacific Northwest.

The **Duncan Award** is presented to one or more individuals whose career exemplifies Dr. Duncan's dedication and innovation on behalf of children with disabilities.

Dr. Duncan's family and friends established the **Duncan Gift Fund** in his honor to provide funds for an honorarium for the Duncan Award winner and to support the Duncan Seminar. Additional donations are welcome and should be specifically labeled for the "Duncan Seminar Gift Fund" and sent to Seattle Children's Foundation, P.O. Box 5371/MS S-200, Seattle, WA 98145-5005.

This program was partially supported by the Washington State Department of Health Children with Special Health Care Needs Program, the Center on Human Development and Disability, University of Washington, and the Leadership Education in Neurodevelopmental Disabilities (LEND) training program, funded by the Health Resources and Services Administration, Maternal and Child Health Bureau through grant # T73MC00041.

Course Schedule Friday, March 31, 2017 | 7:45 AM – 4:30 PM | Seattle Children’s Hospital, Wright Auditorium

7:15 AM	Registration/Continental Breakfast (provided)	11:45 AM	2017 DUNCAN AWARD PRESENTATION <i>Recipient: Beth Ellen Davis, MD, MPH, Director, University of Washington, Leadership in Education in Neurodevelopmental and Related Disabilities</i>
7:45 AM	Welcome and Opening Remarks Emily Myers, MD; Jeff Sperring, MD, CEO	12:15 PM	Lunch (provided)
8:00 AM	Family Panel: Living with Developmental Disability and Behavior Challenges – A Family Perspective <i>Facilitator: Tiffany A. Sandy, ARNP, NDV/DNP Clinic</i>	1:00 PM	The Bio-Behavioral Model to Assess and Treat Disruptive Behavior Eric Boelter, PhD, BCBA-D; James Mancini, MS, CCC-SLP; Aditi Sharma, MD
9:00 AM	Optimizing Neuropsychiatric Health for People with Developmental Disabilities Dan Doherty, MD, PhD; Nina de Lacy, MD, MBA	2:15 PM	Break, Resource Room and Poster Browsing
10:15 AM	Break, Resource Room and Poster Browsing	2:30 PM	Helping Children with Developmental Disabilities and Restrictive Eating: An Interdisciplinary Approach to Improving Mealtimes Danielle Dolezal, PhD, BCBA-D; Cara Pierson, ARNP; Andrea Pintacura, MS, CCC-SLP; Barb York, MS, RD, CD
10:30 AM	Keynote Speaker: What Can Juggling Teach Us About Mental Health in Developmental Disorders? Bryan H. King, MD, MBA, Professor and Vice Chair for Child Psychiatry - UCSF Health, VP Child Behavioral Health Services - UCSF Benioff Children’s Hospitals	3:45 PM	It Takes a Team: An Interdisciplinary Approach to Treatment of Mental Health Challenges Emily Myers, MD; Bryan H. King, MD; Eric Boelter, PhD, BCBA-D; Danielle Dolezal, PhD, BCBA-D; Barb York, MS, RD, CD
		4:30 PM	Evaluation/Adjourn

Faculty

- Eric Boelter**, PhD, BCBA-D, Clinical Supervisor, Bio-behavioral Program, Psychiatry and Behavioral Medicine, Autism Center, Seattle Children’s Hospital
- Nina de Lacy**, MD, MBA, Assistant Professor, Psychiatry; Co-Director, Developmental Neuropsychiatry Program, Neurodevelopmental Clinic, Seattle Children’s Hospital
- Dan Doherty**, MD, PhD, Associate Professor; Pediatrics, Co-Director, Developmental Neuropsychiatry Program, Seattle Children’s Hospital
- Danielle N. Dolezal**, PhD, BCBA-D, Clinical Supervisor, Pediatric Feeding Program, Psychiatry and Behavioral Medicine, Autism Center, Seattle Children’s Hospital
- Bryan H. King**, MD, MBA, Professor and Vice Chair for Child Psychiatry – UCSF Health, Vice President Child Behavioral Health Services – UCSF Benioff Children’s, San Francisco, CA
- James Mancini**, MS, CCC-SLP, Speech-Language Pathologist, Coordinator of Education, Training & Outreach, Autism Center, Seattle Children’s Hospital
- Emily Myers**, MD, Assistant Professor of Pediatrics, Division of Developmental Medicine, Seattle Children’s Hospital and University of Washington
- Cara Pierson**, ARNP, Psychiatry and Behavioral Health, Seattle Children’s Hospital
- Andrea Pintacura**, MS, CCC-SLP, Speech Pathologist, Speech Pathology, Seattle Children’s Hospital
- Tiffany A. Sandy**, MSN, ARNP, CPNP, Nurse Practitioner, Developmental Pediatrics, Seattle Children’s Hospital
- Aditi Sharma**, MD, Acting Assistant Professor, Psychiatry and Behavioral Health, Seattle Children’s Hospital
- Daniel Tolson**, MD, FAAP, I MAJ, MCI I, Medical Director, EFMP, Madigan Army Medical Center, Tacoma, WA
- Maggie Tai Tucker**, OT, Occupational Therapist, Autism Center, Seattle Children’s Hospital
- Barb York**, RD, Clinical Dietician, Nutrition Services, Seattle Children’s Hospital

Planning Committee

- Sarah Fenner**, RN, BSN, CPN, Nurse Clinician, Division of Developmental Medicine, Neurodevelopmental Program, Seattle Children’s Hospital
- Lisa Herzig**, MD, Assistant Professor, Developmental Behavioral Pediatrics, Division of Developmental Medicine, Seattle Children’s Hospital and University of Washington
- Michelle Hoffman**, MLTCA, BA, Family Engagement Coordinator, Department of Health, Olympia, WA
- Kathleen Lehman**, PhD, Clinical Assistant Professor, Psychiatry and Behavioral Sciences, Center on Human Development and Disability, University of Washington, Seattle, WA
- Connie Leibow**, MPT, Lead Physical Therapist, Department of Physical Therapy, Seattle Children’s Hospital
- Jill McCormick**, Program Director, PAVE, Family to Family Health Information Center, Family Voices of Washington, Tacoma, WA
- John F. McLaughlin**, MD, Professor Emeritus, Department of Pediatrics, University of Washington and Seattle Children’s Hospital
- Jennifer Minhas**, BSN, RN, Nurse Manager, Outreach Education, Seattle Children’s Hospital
- Emily Myers**, MD (see Faculty)
- Kim Nowak-Cooperman**, MS, RDN, Clinical Dietician, Seattle Children’s Hospital
- Lynna Song**, MPA, BA, Conference Coordinator, Outreach Education, Seattle Children’s Hospital
- Jacquie Stock**, MPH, Manager, Seattle Children’s Center for Children with Special Needs, External Affairs Department, Seattle, WA
- Sally N. Stuart**, PhD, LICSW, Interdisciplinary Training Director, LEND; Clinical Associate Professor, Department of Social Work, University of Washington, Seattle, WA
- Daniel Tolson**, MD, FAAP I MAJ, MCI I (see Faculty)
- Doris “Kiko” Van Zandt**, BS, RN, CCRN, Nurse Clinician, Rehabilitation Medicine Clinic, Seattle Children’s Hospital

How to Register

Online: seattlechildrens.org/outreach

Or contact: Outreach Education
Seattle Children’s
PO Box 5371, M/S S-219
Seattle, WA 98145-5005

206-987-3200 (phone)
206-987-5705 (fax)
outreacheducation@seattlechildrens.org

Registration Fees

Received by March 16, 2017:	Single	Group Rate* (3 or more registering together)
MD, PhD	\$195.00.....	\$180.00
Seattle Children’s Staff, MD, PhD	\$180.00.....	\$165.00
RN, OT, PT, SLP, Other Professional	\$175.00.....	\$160.00
Seattle Children’s, RN, OT, PT, Professionals	\$140.00.....	\$130.00
Parent/Family Member/Student	\$80.00	\$70.00

Received after March 16, 2017:

MD, PhD	\$210.00
RN, OT, PT, SLP, Other Professional	\$190.00
Parent/Family Member/Student	\$90.00

There will be a \$50 processing fee for cancellations received after March 17, 2017. Cancellations received prior to March 17, 2017 will be charged a \$10 administrative fee.

We accept VISA, MC, purchase orders, or personal checks, written to Seattle Children’s and mailed to Outreach Education (see address under “How to Register” section).

**Persons applying for group rates may register individually, but must identify the group they are associated with.*

A limited number of scholarships for parents and family members are available on a first-come, first-served basis. Please contact Lynna Song at 206-987-5318 or Outreach Education at 206-987-3200 to apply. (*Application deadline is March 17, 2017.*)

Accreditation

Physicians may claim Cat 2 CME for attending this event.

Washington State Clock Hours - Puget Sound Educational Service District6.75 hours

Provider approved by the California Board of Registered Nursing, Provider Number 16541 for 6.75 Contact Hours (pending).

For more information, call Lynna Song at (206) 987-5318 or email lynna.song@seattlechildrens.org. Or, call Outreach Education at (206) 987-3200 or email outreacheducation@seattlechildrens.org.